

Innovation Preceding All

Elitech[®]

Smarter
Smaller

IoT DATA LOGGER

Safe • Stable • Reliable

Elitech iCold Cloud

Elitech software focuses on cold chain data management and analysis. It helps users to comply with the local industry standards and regulations, and improve cold chain quality and performance. Elitech software provides

real-time monitoring, parameter configuration, alarm notification, data analysis, report download and other functions that can meet various requirements in different applications.

Cloud Platform

Elitech iCold®



Main Functions

- Real-time data monitoring
- Emails warning and alarm
- Historical data record and query, data analysis report export
- Electronic signature and endorsement for FDA CFR 21 Part 11

Elitech Geo



Main Functions

- Data and location query per S/N
- Data report generated based on route settings and report sharing supported
- Alarm emails sent via real-time uploaded data

Software(PC)

ElitechLog



Main Functions

- Export data and generate analysis reports
- Data analysis in parallel for multiple devices
- Electronic signature for FDA CFR 21 Part 11
- Data sharing on Cloud with Bluetooth data logger

Elitech iCold®

Elitech iCold® is a cloud-based remote accessible platform. It is compatible with RCW series products to realize real-time monitoring of cold chain data, automatic alerts and notifications, online data analysis and management. iCold helps users to achieve effective management of every step of cold chain and immediate assessment compliance. It complies with FDA CFR 21 Part 11 requirements and supports iOS and Android apps.

PC

Detailed Functions

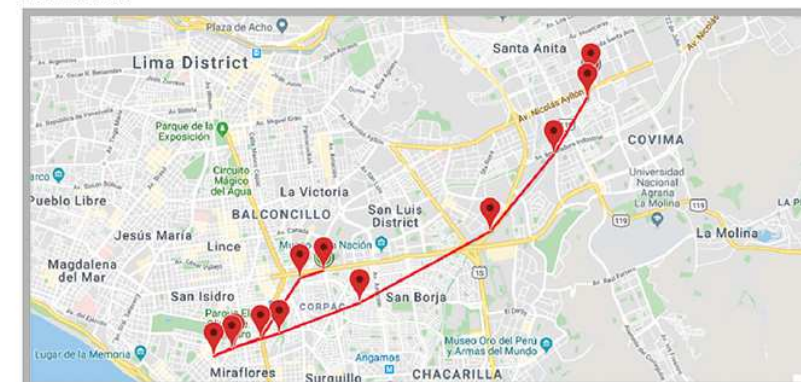
• Real-Time Monitoring

Take control of goods information anywhere at any time, including temperature, humidity and real-time location.



• Track Monitoring

Generate the device's track and routes in the time period according to its location information.



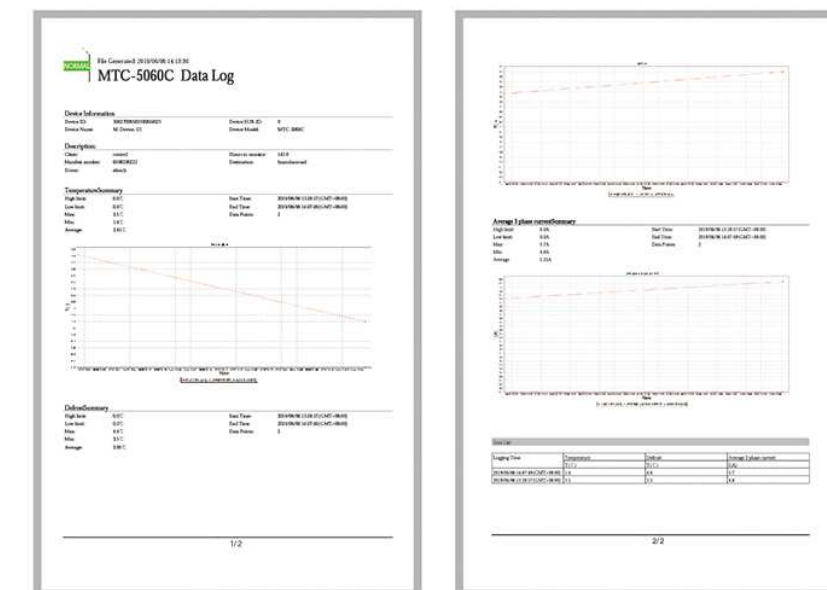
• Alarm & Notification

Temperature and humidity alarms will be sent to relevant accounts via email and app. Users can also subscribe to temperature and humidity information.



• FDA Data Analysis Report

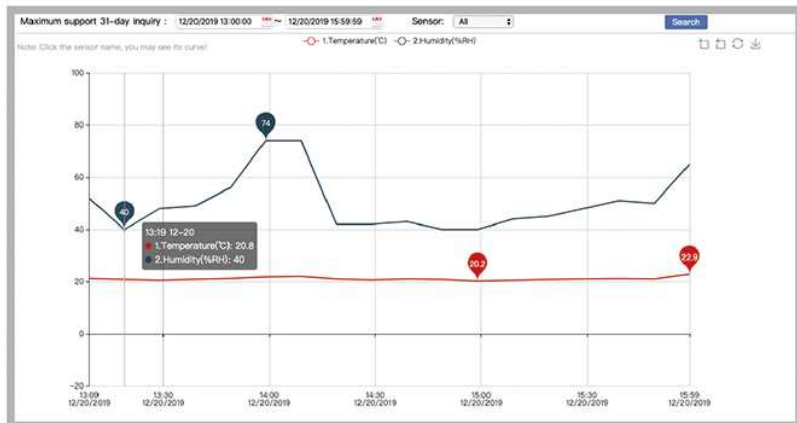
Comply with FDA and ensure compliance. Quickly generate temperature and humidity data analysis report that includes device and trip information, temperature and humidity list.



History Query & Download

Historical data record and query, data analysis report export. Support historical data query, graph analysis and export to multiple formats like EXL and PDF.

Date	12/20/2019 13:00:00	12/20/2019 15:59:59	Search	Export Data	File-Size (21 CP9)
Logging Time	Temperature	Humidity	Alarm	Description	
1	2019-12-20 15:59:00GMT-05: 22.9C	65%RH	Normal		
2	2019-12-20 15:49:00GMT-05: 21.0C	50%RH	Normal		
3	2019-12-20 15:39:00GMT-05: 21.0C	51%RH	Normal		
4	2019-12-20 15:29:00GMT-05: 21.0C	48%RH	Normal		
5	2019-12-20 15:19:00GMT-05: 20.8C	45%RH	Normal		
6	2019-12-20 15:09:00GMT-05: 20.8C	44%RH	Normal		
7	2019-12-20 14:59:00GMT-05: 20.2C	40%RH	Normal		
8	2019-12-20 14:49:00GMT-05: 20.8C	40%RH	Normal		
9	2019-12-20 14:39:00GMT-05: 21.0C	43%RH	Normal		
10	2019-12-20 14:29:00GMT-05: 20.8C	42%RH	Normal		
11	2019-12-20 14:19:00GMT-05: 21.0C	42%RH	Normal		
12	2019-12-20 14:09:00GMT-05: 22.0C	74%RH	Normal		
13	2019-12-20 13:59:00GMT-05: 21.8C	74%RH	Normal		
14	2019-12-20 13:49:00GMT-05: 21.2C	56%RH	Normal		
15	2019-12-20 13:39:00GMT-05: 20.9C	49%RH	Normal		
16	2019-12-20 13:29:00GMT-05: 20.8C	48%RH	Normal		
17	2019-12-20 13:19:00GMT-05: 20.8C	40%RH	Normal		
18	2019-12-20 13:09:00GMT-05: 21.2C	52%RH	Normal		



APP

Real Time Monitoring

Check device data and status anywhere and anytime.

Device Information	
Device Name: temp	
Model: TemLog W1	
GUID: 82492156690760258328	
Status: Online	
Location:	
Project: wangyanyan	
Created: 2019-06-09 22:22:35	
Last Synced:	
Sensors: 2	
P1: P1	77.2°F
P2: P2	77.2°F

Data Query & Printing

Support historical data query, graphic analysis and data report printing via Bluetooth printer.

Device Information	
Device Name: temp	
Model: TemLog W1	
GUID: 82492156690760258328	
Status: Online	
Location:	
Project: wangyanyan	
Created: 2019-06-09 22:22:35	
Last Synced:	
Sensors: 2	
P1: P1	77.2°F
P2: P2	77.2°F

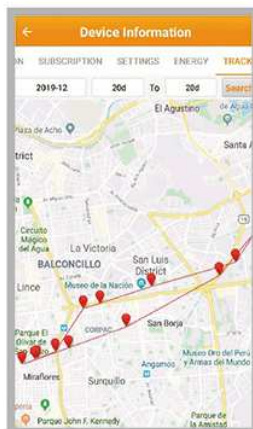
Parameter Settings

Configure device parameters remotely based on cargo shipments and storage.

Device Information	
Graph	Alarm
Notification	Settings
Energy	Track
Record Interval	>
TS Temperature Set Value	230°C >
CD Cooling Differential	0.3°C >
Csp Cooling Start Point	230.3°C >
HD Heating Differential	0.3°C >
Hsp Heating Start Point	229.6°C >
PT Protection Time	3Min >
AH Alarm High Limit	35°C >
AL Alarm Low Limit	0°C >
CA Temperature Calibration	0°C >
Temperature Unit	Temperature(°C) >

Location & Track

Generate the device's track and routes in the time period according to its location information.



Elitech Geo

Designed for logistics applications, Elitech Glog platform works with the GLOG cargo tracker to monitor and manage temperature and humidity status, location information, and hazard activity alarms for in-transit shipments, and to export data report and push emails. Elitech Geo eliminates the complexity of in-transit tracking and provides global visibility of shipments in real time.

PC

Detailed Functions

Data Report & Email

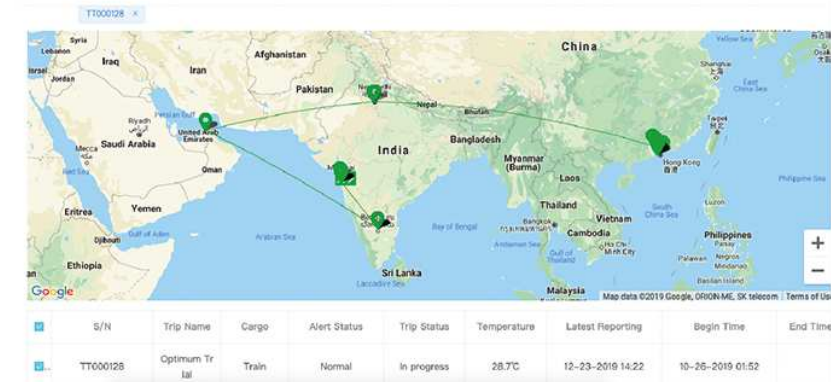
Generate a trip-based data report including device, trip information and temperature, which can be sent by email.

DATA LOG	
Device Number: TT000128	Device Model: TempLog W1
Shipping Name: Optimum Tr	Start Date: 2019-12-20
Shipping Address: El Agustino	End Date: 2019-12-20
Shipping Time: 10:00:00	End Time: 10:00:00
Shipping Status: In progress	End Status: In progress
Shipping Temperature: 28.7°C	End Temperature: 28.7°C
Shipping Humidity: 40%	End Humidity: 40%
Shipping Time: 10:00:00	End Time: 10:00:00
Shipping Status: In progress	End Status: In progress

S/N	Trip Name	Cargo	Alert Status	Trip Status	Temperature	Latest Reporting	Begin Time	End Time
TT000128	Optimum Tr	Train	Normal	In progress	28.7C	12-23-2019 14:22	10-26-2019 01:52	

Traceability & Monitoring

Automatically upload the temperature, location and cargo's (unpacked) status. Monitor cargo's real-time status via S/N.



Multiple Shipment Management

Query the status of all shipments under the user account for view and management.

Trip Management	
All	Cancel
In progress	Complete
S/N: 300002	
Creation date: 05-05-2019 15:01	Goods: b
Status: pending	
S/N: TT000022	
Creation date: 05-09-2019 11:46	Goods:
Status: pending	

Warnings & Notifications (To be developed)

Temperature and humidity alarm and abnormal status of goods will be sent to the relevant account via email.

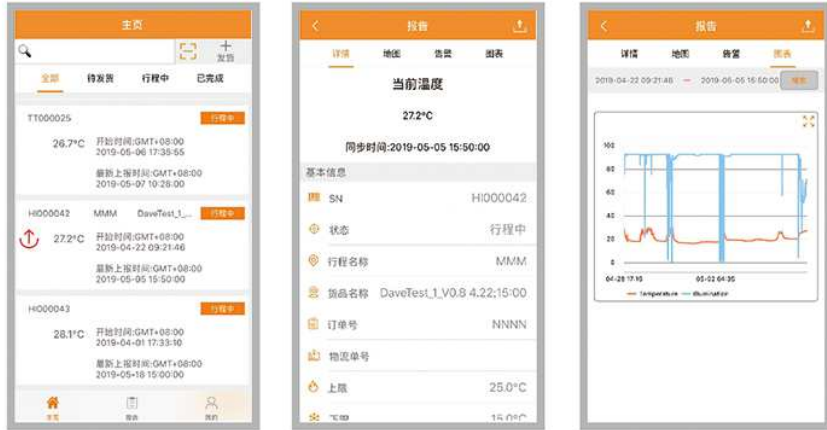
APP

• Multiple Shipment Management

Query the status of all shipments under the user account for view and management.

• Traceability & Monitoring

Automatically upload the temperature, humidity and unpacked status of cargo shipments, directly check and manage data via app.



• Location & Routes

Display shipments' instant and historical locations.

• Trip Configuration

Scan the QR code to configure logistics information, cargo temperature requirements and alarm contacts, which is simple and efficient.



ElitechLog

ElitechLog is compatible with RC/LogEt series data loggers. It supports parameter settings, data download, report generation and export, and helps to judge the compliance and effectiveness of shipments in the logistics process. The LogEt series (Bluetooth-enabled) supports data storage on Cloud with Elitech app. It complies with FDA CFR 21 Part 11 requirements and supports Win and MAC versions.

PC

Detailed Functions

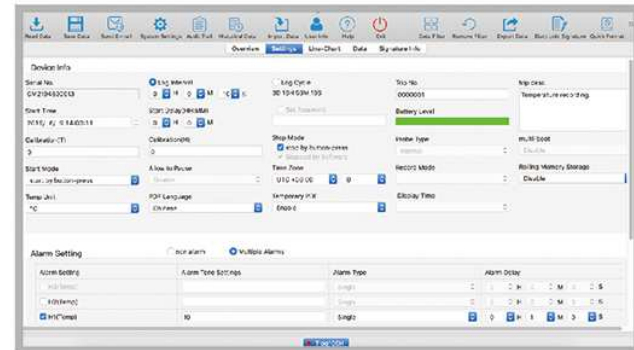
• Statistics

Read the current logger's status and parameters. Summarize and display the status information (alarm value, maximum and minimum value, start time, stop time, etc.).



• Parameter Settings

Read the logger's parameters and synchronize the current or latest parameters settings to the page display, or set the parameters manually and save to the logger.



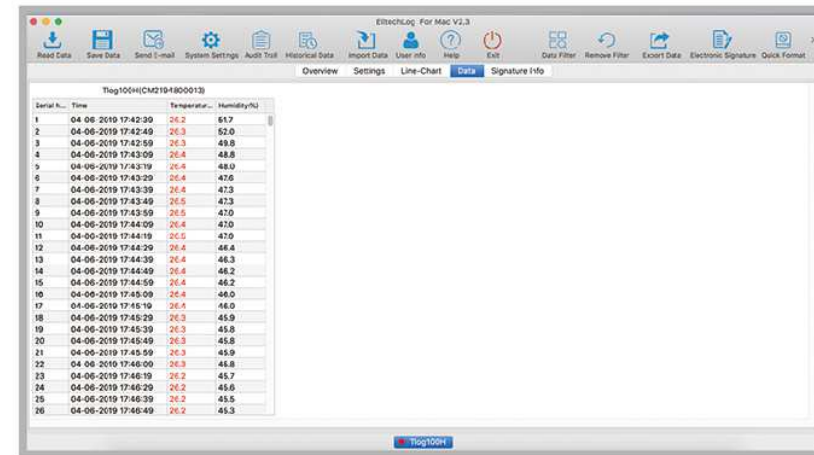
• Graph

Display the selected or historical data in graph. Up to 10 data can be displayed in the graph simultaneously, it is convenient for users to compare temperature and humidity changes of multiple curves. The graph supports stepless zooming and dragging, and user can click on the button in the upper left corner of the graph to zoom in, zoom out and drag the curve.



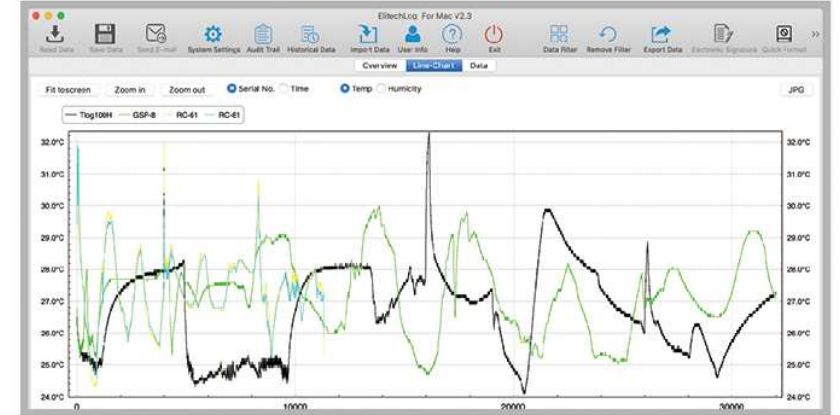
• Data List

Display the selected or historical data in list. It can highlight the over limit data in different colors or compare the multiple loggers data - up to 10 loggers can be listed at the same time.



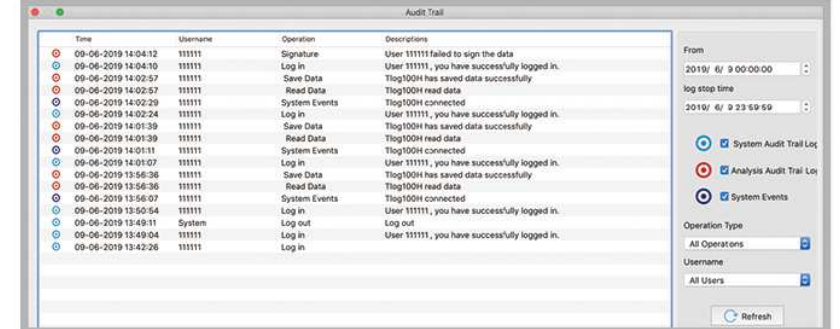
• Multiple Routes Graph

Display graph & data analysis for multiple routes.



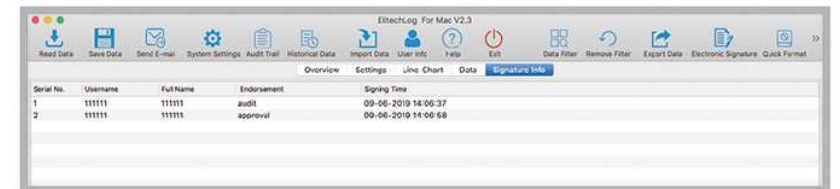
• FDA Log

Display and trace the data in compliance with FDA standards, including account (user login, logout, edit, lock), endorsement (unlock, add, edit, delete and modify), data (read, save, import, and export), and the software system modification, etc.



• Endorsement

Display and trace user's endorsement on the current data, including time, content, endorsement account information, etc.



IoT Data Logger

Software:
Elitech Geo
Page: 4-5



Technical Specifications		
Temperature Measurement Range	-30°C to 55°C	Resolution: 0.1°C
Accuracy	0.5°C/0.9°F (-20°C~40°C) ; 1°C/1.8°F (others)	
Sensor	Internal NTC temperature sensor and light sensor	
Battery Life ¹	20 days (5 minute logging interval and 60 minute upload interval)	
Start Delay ²	30 minutes (customizable)	
Logging Interval ³	5 minutes (customizable)	
Upload Interval ⁴	60 minutes (customizable)	
Shelf Life	1 year stored at room temperature	
Storage Temperature	+15°C~30°C	
Protection Grade	IP65	

¹ Battery Life: The estimated operation days of the logger(based on certain conditions).

² Start Delay: After start delay time elapses, the activated logger will start logging.

³ Logging Interval: The interval between two readings after the logger starts logging.

⁴ Upload Interval: The interval between two readings that being uploaded to the Cloud.



IoT Data Logger Glog-5

IoT

Overview

Glog-5 is a single-use data logger that records real-time temperature, position and illumination. Quickly started by pulling out battery insulator strip that ensure logistics efficiency and quality.

Functions

- Easy to activate, quickly create shipments for monitoring
- Check temperature and position in real-time through S/N
- Light sensor to determine violation door opening operations during transportation
- Auto email alert in case of over temperature limit
- Download PDF and Excel report from Elitech Glog
- Battery rechargeable, shelf life up to 2 years

IoT

IoT Data Logger

RCW-2000 Series



(Used with RCW-2100/2200 Sensors)

Software:

Elitech iCold

Page: 2-3



Overview

Gateway RCW-2000 combines with multiple wireless sensors RCW-2100/RCW-2200, to form a monitoring system with multiple point measurements. With advanced LoRa communication technology, Elitech Cloud and app, provide solutions to temperature and humidity monitoring to medium and large warehouses, production workshops and etc.

Features

Gateway RCW-2000

- GPRS/Wi-Fi/4G versions are available to different communication requirements
- Maximum 55 wireless sensors can be connected
- Data read by connected sensors can be viewed on Elitech Cloud and app
- Audio-visual warnings and alarms

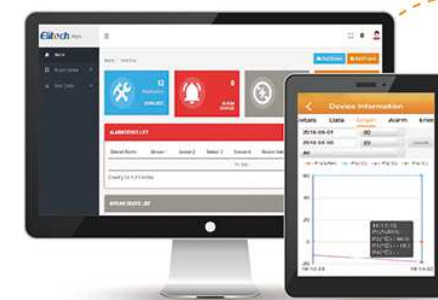
Wireless Sensor RCW-2100/RCW-2200

- No wiring required, easy to install; no configuration required, automatically connect to gateway
- Max. data transmission distance of 1,000 meters in open space
- Built-in rechargeable lithium battery, battery life up to 12 months in-use life
- Unlimited Cloud storage and additional 20,000 points local storage if offline accidentally
- Protection class up to IP65 rating
- Compliance with FDA (21CFR), CE (EN12830)



RCW-2000

LoRa™



RCW-2100
wireless sensors

RCW-2200
wireless sensors

Technical Specifications	RCW-2000	
Power supply	12V/2.5A(DC)	
Maximum loggers connected	12 data loggers at maximum with uploading interval within 5 minutes; 50 data loggers at maximum with uploading interval above 5 minutes.	
Maximum transmission distance	1000m at unobstructed line of sight	
Alarm output	Buzzer	
Communication interface	GPRS/Wi-Fi/4G	
Operating frequency	470~920MHz ISM band	
Battery	3.7V lithium battery	
Battery life	12 hr.	
	RCW-2100/2100H	RCW-2200
Temperature measuring range	-20°C ~ +65°C	-30°C ~ +65°C
Temperature accuracy	±0.5°C(-20°C~40°C); ±1°C(others)	±0.5°C(-20°C~40°C); ±1°C(others)
Humidity measuring range	10%~95% (RCW-2100H)	10%~95%
Humidity accuracy	±5%RH (RCW-2100H)	±5%RH
Date uploading interval	1 min to 24 hr.	1 min to 24 hr.
Memory capacity	20,000 points	20,000 points
Communication interface	LoRa	LoRa
Battery	2 x ER14335(non-rechargeable)	3.7V lithium battery
Battery life	12 months (@ 10 min upload interval,@25 °C)	12 months (@ 5 min upload interval ,@25°C)
Operating frequency	470~920MHz ISM band	470~920MHz ISM band
Alarm output	Led,APP, E-mail push,	Led, APP, E-mail push,
Protection grade	IP65	IP64

IoT Data Logger RCW-360

2G 4G

Software:

Elitech iCold

Page: 2-3

**Overview**

RCW-360 is a wireless temperature and humidity monitor with 2G/4G/Wi-Fi version. Its low power consumption features long standby time and it designs for multiple installation methods that can be widely used in various temperature and humidity monitoring scenes.

Features

- Real-time recording and monitoring of temperature and humidity
- App and Email alarms from Cloud; Audible and visual alarm from device
- Multiple installation and power supply methods, flexible to be installed anywhere
- Elitech Cloud supports parameter configurations, graph analysis, report export and etc
- Unlimited Cloud storage with additional local storage of 20,000 points if off-line
- 2G/4G versions support LBS (location-based service) positioning

Technical Specifications	RCW-360-TE	RCW-360-THE	RCW-360-TH
Power supply	5V/1A(DC)	5V/1A(DC)	5V/1A(DC)
Temperature measuring range	-40°C ~ +80°C	-40°C ~ +80°C	-20°C ~ +70°C
Temperature accuracy	±1.0°C(-25°C~0°C); ±0.5°C(0°C~40°C); ±2°C(others)	±1.0°C(-25°C~0°C); ±0.5°C(0°C~40°C); ±2°C(others)	±1.0°C(-25°C~0°C); ±0.5°C(0°C~40°C); ±2°C(others)
Humidity measuring range	-/-	10%~95%	10%~95%
Humidity accuracy	-/-	±5%RH	±5%RH
sensor	STS31	SHT31	HDC1080
Logging interval	1 min to 24 hr.	1 min to 24 hr.	1 min to 24 hr.
Memory capacity	32,000 points for each channel(Max)	32,000 points for each channel(Max)	32,000 points for each channel(Max)
Communication interface	2G/4G/Wi-Fi(2.4G)	2G/4G/Wi-Fi(2.4G)	2G/4G/Wi-Fi(2.4G)
Alarm output	Led,Buzzer, APP, E-mail push	Led,Buzzer, APP, E-mail push	Led,Buzzer, APP, E-mail push
Battery	3.7V lithium battery	3.7V lithium battery	3.7V lithium battery
Battery life	Wi-Fi:30days (@25°C, Logging interval=10min) 2G:30days (@25°C, Logging interval=10min) 4G:15days (@25°C, Logging interval=10min)	Wi-Fi:30days (@25°C, Logging interval=10min) 2G:30days (@25°C, Logging interval=10min) 4G:15days (@25°C, Logging interval=10min)	Wi-Fi:30days (@25°C, Logging interval=10min) 2G:30days (@25°C, Logging interval=10min) 4G:15days (@25°C, Logging interval=10min)



IoT Data Logger RCW-600WiFi

Wi-Fi

Software:

Elitech iCold

Page: 2-3

**Overview**

RCW-600WiFi is a real-time dual-channel temperature monitor based on Wi-Fi. With a large TFT screen and touch buttons, it supports parameter configuration on device remotely. The logger can be widely applied in various temperature monitoring scenes.

Features

- Check temperature data flexibly
- App,Email alarms from Cloud; Audio-visual warnings and alarms from device
- Large TFT screen for viewing data, touch buttons for on-site settings
- Offline data storage, automated Wi-Fi re-connection and data transmission
- Unlimited Cloud storage, parameter settings, graph analysis, report export, etc via Elitech
- 2 power supply modes, 5m dual temperature sensor
- Buttons parameter configuration
- 5m dual temperature sensors with high sensitivity
- Max 20,000 points of local storage
- Real-time visibility for cargo in-transit
- Rechargeable and reusable

Technical Specifications	
Power supply	5V/1A(DC)
Temperature measuring range	-40°C ~ +80°C
Temperature accuracy	±0.5°C(-20°C~40°C); ±1°C(others)
Temperature sensor type	NTC
Sensor wire length	5m
Date uploading interval	1 min to 24 hr.
Battery	3.7V lithium battery
Battery life	4 hr.
Memory capacity	20,000 points
Alarm output	Led,Buzzer, APP, E-mail push,
Communication interface	Wi-Fi(2.4G)



IoT Data Logger RCW-800WiFi



Software:
Elitech iCold
Page: 2-3

Overview

RCW-800WiFi is a real-time temperature and humidity monitor based on Wi-Fi network. With a large TFT screen and touch buttons, it supports parameter configuration on device and remotely. The logger can be widely applied in various temperature monitoring scenes.

Features

- Check temperature and humidity data flexibly
- App and Email alarms from Cloud; Audio-visual warnings and alarms from device
- Large TFT screen for viewing various data, touch buttons for on-site settings
- Offline data storage, automated Wi-Fi re-connection and data transmission
- Unlimited Cloud storage, parameter settings, graph analysis, report export, etc via Elitech
- Two power supply modes, 5m temperature and humidity combined sensors

Technical Specifications

Power supply	5V/1A(DC)
Temperature measuring range	-40°C ~ +80°C
Temperature accuracy	±0.5°C(-20°C~40°C); ±1°C(others)
Humidity measuring range	10%~95%
Humidity accuracy	±5%RH
Temperature sensor type	NTC
Humidity sensor type	Honeywell
Sensor wire length	5m
Date uploading interval	1 min to 24 hr.
Battery	3.7V lithium battery
Battery life	4 hr.
Memory capacity	20,000 points
Alarm output	Led,Buzzer, APP, E-mail push,
Communication interface	Wi-Fi(2.4G)



Technical Specifications

Power supply	12V/2.5A(DC)
Temperature measuring range	-40°C ~ +70°C
Temperature accuracy	±1.0°C(-25°C~0°C); ±0.5°C(0°C~40°C);±2°C(others)
Humidity measuring range	10%~95%
Humidity accuracy	±5%RH
Temperature sensor	NTC thermistor(Max 4 channels)
Humidity sensor	Honeywell (Max 2 channels)
Logging interval	1 min to 24 hr.
Memory capacity	20,000 points for each channel(Max)
Communication interface	3G,SMS
Alarm output	Led,Buzzer, APP, E-mail push, and relay alarm
Battery	3.7V lithium battery
Battery life	6 hr.

Indoor use only, prohibited from exposure to rain and sun

IoT Data Logger RCW-400A



Software:
Elitech iCold
Page: 2-3

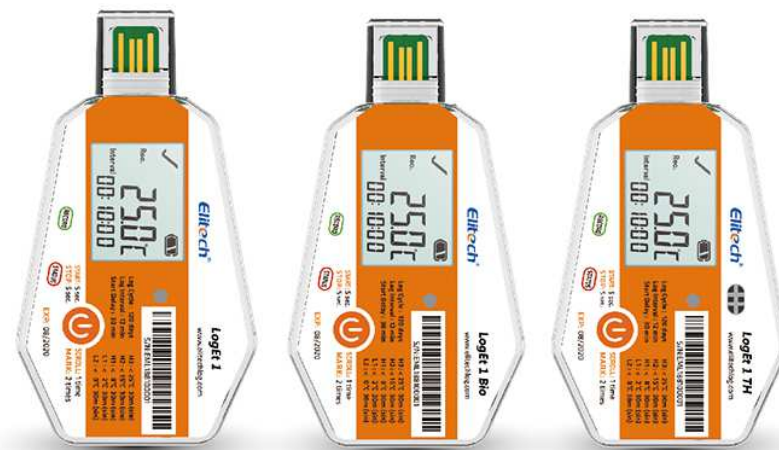
Overview

RCW-400A is a real-time multi-channel temperature and humidity monitor with 3G versions. It features a large LCD screen and supports SMS alarm, a variety of temperature and humidity sensor deployments, widely applied in various scenes that requires temperature and humidity monitoring.

Features

- Check temperature and humidity data flexibly
- 4 channels of temperature and humidity sensors for different environmental monitoring needs
- Email alarms from Cloud, SMS, Audio-visual warnings and alarms from device
- Offline data storage
- Unlimited Cloud storage, parameter configuration, graph analysis, report export, etc via Elitech cloud

Data Logger Series



LogEt 1

LogEt 1 Bio

LogEt 1 TH

Software:

ElitechLog

Page: 5-6



Online Web:

www.loget-i-elitech.com

Single-Use Data Logger LogEt 1 Series

Single
Use

Overview

LogEt 1 series are temperature/humidity data loggers with LCD display that can be used in pharmaceutical packages or cooler boxes. The loggers feature a light sensor that can be useful for determining violation door opening operations during transportation and verifying the safety and efficiency for pharmaceutical cold chain logistics.

Features

- High-precision temperature/humidity sensor, accuracy heightened to $\pm 0.3^{\circ}\text{C}$, 3%RH
- LCD screen for more powerful and intuitive indication
- Software-free, online website configuration
- Light sensor to determine violation door opening operations during transportation
- Auto encrypted PDF report with password protection function
- Built-in USB port allows quick access to PCs and ElitechLog software
- Battery life up to 180 days, shelf life up to 2 years
- Protection class up to IP67 rating (Except LogEt 1 TH)
- Complies with CE (EN12830), RoHS and FDA (21CFR)

ElitechLog Online Configuration Websit

Technical Specifications	LogEt 1	LogEt 1 Bio	LogEt 1 TH
Recording Options	Single-Use	Single-Use	Single-Use
Temperature Range	-30 °C to 70 °C	-30 °C to 70 °C	-30 °C to 70 °C
Humidity Range	-	-	0-100% RH
Temperature Accuracy	$\pm 0.5^{\circ}\text{C}$	$\pm 0.3^{\circ}\text{C}$ (-20 °C / +40 °C); $\pm 1.0^{\circ}\text{C}$ (other range)	$\pm 0.3^{\circ}\text{C}$ (-20 °C / +40 °C); $\pm 0.5^{\circ}\text{C}$ (other range)
Humidity Accuracy	-	-	$\pm 3\%\text{RH}$ (25 °C, 20%RH to 80%RH); $\pm 5\%\text{RH}$ (other range)
Resolution	0.1 °C	0.1 °C	0.1 °C, 0.1%RH
Data Storage Capacity	16,000 readings	16,000 readings	16,000 readings
Shelf Life/Battery	2 years'/CR2450 button cell	2 years'/CR2450 button cell	2 years'/CR2450 button cell
Recording Interval	12 minutes(standard, others on request)	12 minutes(standard, others on request)	12 minutes(standard, others on request)
Recording Duration	up to 120 days ² (standard, others on request)	up to 120 days ² (standard, others on request)	up to 120 days ² (standard, others on request)
Reprogrammable	With free Elitech Win or MAC software	With free Elitech Win or MAC software	With free Elitech Win or MAC software
Startup Mode	Button or software	Button or software	Button or software
Stop Mode	Button, software or stop when full	Button, software or stop when full	Button, software or stop when full
Protection Class	IP67	IP67	NONE
Certifications	FDA EN12830, CE, RoHS	FDA EN12830, CE, RoHS	FDA EN12830, CE, RoHS

1. Depending on optimal storage conditions[15 °C to 23 °C /45% to 75% RH]

2. Depending on application temperature(very low/ high temperatures may shorten it)

1. Depending on optimal storage conditions[15 °C to 23 °C /45% to 75% RH]

2. Depending on application temperature(very low/ high temperatures may shorten it)

1. Depending on optimal storage conditions[15 °C to 23 °C /45% to 75% RH]

2. Depending on application temperature(very low/ high temperatures may shorten it)

Multi-Use Data Logger RC-5+ Series

Multi
Use

Software:

ElitechLog

Page: 5-6



Overview

RC-5 is Elitech conventional USB temperature data logger that is widely used all over the world in various fields.

RC-5+ is the upgraded version with automatic generation of PDF report, repeat start functions and etc.

Technical Specifications

Recording Options	Multi-Use
Temperature Range	-30 °C to 70 °C
Temperature Accuracy	±0.5 °C (-20 °C/+40 °C); ±1.0 °C (other range)
Temperature Resolution	0.1 °C
Data Storage Capacity	32,000 readings
Shelf Life/Battery	1 year'/CR2032 button cell (RC-5+)
Recording Interval	3 minutes(standard) (RC-5+)
Validation Certificate	Hardcopy
Report Generation	Automatic PDF report (RC-5+)
Password Protection	Optional on request
Alarm Configuration	Optional, up to 5 points (RC-5+)
Reprogrammable	With free Elitech Win or MAC software
Startup Mode	Button or software
Stop Mode	Button, software or stop when full
Protection Class	IP67
Certifications	FDA EN12830, CE, RoHS

1. Depending on optimal storage conditions (15 °C to 23 °C / 45% to 75% RH)



RC-5

RC-5+

RC-5+

Features

- Internal temperature sensor, accuracy up to ±0.5 °C
- Built-in USB port allows quick access to PCs and ElitechLog software
- LCD display with powerful indications on status and statistics
- Up to 32,000 points memory capacity
- IP67 rating
- Compliance with CE (EN12830), RoHS and FDA (21CFR)

RC-5+ Upgraded Functions:

- Auto encrypted PDF report with password protection function
- Quick restart without re-configuration
- Up to 5 alarm thresholds configurable
- External temperature sensors (optional)
- Compliance with CE(EN12830), RoHS, DO-160G and FDA (21CFR)

Single
Use

Single-Use Data Logger RC-18/19

Software:

ElitechLog

Page: 5-6



Overview

RC-18 is Elitech conventional temperature data logger with automatic PDF report generation. It can provide reliable temperature recordings of food and pharmaceuticals during warehouse storage, distribution and transportation in order to ensure safety, security and efficiency.

RC-19 is the upgrade version with password protection, multiple alarm thresholds functions and allows to re-configure parameters.

Features

RC-18

- Built-in USB port allows quick access to PCs and ElitechLog software
- Double click START button to quickly mark events for further references
- Up to 16,000 points memory capacity
- Battery life up to 180 days, shelf life up to 2 years
- Protection class up to IP67 rating
- LED indicator for over temperature alarms
- Compliance with CE (EN12830), RoHS and FDA (21CFR)

RC-19

- Re-configurable, allows to customize parameters
- Auto encrypted PDF report with password protection function
- Up to 5 alarm thresholds, suitable for temperature excursion monitoring on temperature-sensitive goods as food, pharmaceuticals, etc



RC-18

RC-19

Technical Specifications

Recording Options	Single-Use
Temperature Range	-30 °C to 70 °C
Temperature Accuracy	±0.5 °C (-20 °C/+40 °C); ±1.0 °C (other range)
Temperature Resolution	0.1 °C
Data Storage Capacity	16,000 readings
Shelf Life/Battery	2 years'/CR2450 button cell
Recording Interval	12 minutes(standard, others on request)
Recording Duration	up to 120 days²(standard, others on request)
Report Generation	Automatic PDF report
Password Protection	None (RC-18) /Optional on request (RC-19)
Alarm Configuration	Optional, only 2 points (RC-18) / up to 5 points (RC-19)
Reprogrammable	With free Elitech Win or MAC software
Startup Mode	Button or software
Stop Mode	Button, software or stop when full
Accessories incl.	Shipping Documents, Certificate, (RC-19-Reprogram Label and Seal-Bag)
Protection Class	IP67
Certifications	FDA EN12830, CE, RoHS

1. Depending on optimal storage conditions (15 °C to 23 °C / 45% to 75% RH)

2. Depending on application temperature (very low/ high temperatures may shorten it)

Multi
Use

Multi-Use Data Logger

Tlog Series

Software:

ElitechLog

Page: 5-6



Features

• **Safe and Secure**

The software is FDA certified.

• **High-Precision Sensor**

Imported Sensirion sensors with precise original calibration.

• **Nanoscale Packaging Technology**

PTFE membrane adopted for protecting the sensor from contamination by liquids and dust while ensuring sensor performance.

• **Brand New Air Chamber Design**

Air flow based air chamber allows for the best possible thermal coupling to the environment and rapid sensing of the actual ambient temperature.

• **Button Sunken**

Elimination of misoperation caused by cargo jolts during transportation.

• **Multiple Scenario Application**

Data transmission by USB and Bluetooth to meet different operation needs.

Suitable for various environmental demands including incubator, cool cabinets, cryogenic refrigerator, dry ice and liquid nitrogen.



Technical Specifications

Model	Tlog 100	Tlog 100E	Tlog 100EC	Tlog 100EL	Tlog 100H	Tlog 100EH
Sensor Type	Internal Temperature	External Temperature	External Cryogenic	External Cryogenic	Internal Temperature and Humidity	External Temperature and Humidity
Temperature Range	-30 ℃ ~ 70 ℃	-40 ℃ ~ 85 ℃	-85 ℃ ~ 150 ℃	-196 ℃ ~ 150 ℃	-30 ℃ ~ 70 ℃	-40 ℃ ~ 85 ℃
Humidity Range	/	/	/	/	0 ~ 100% RH	0 ~ 100% RH
Data Interface	USB	USB	USB	USB	USB	USB
Accuracy	Temperature: ±0.3 ℃ (-20 ℃ ~ 40 ℃); ±0.5 ℃ (-50 ℃ ~ 85 ℃); ±1 ℃ (-100 ℃ ~ 150 ℃); ±2 ℃ (others) ±3%RH (25 ℃ : 20%RH ~ 80%RH), ±5%RH(others)					
Resolution	Temperature: 0.1 ℃; Humidity: 0.1%RH					
Memory	32000 points (MAX)					
Logging Interval	10s ~ 24h					
Start Mode	Press button or use software					
Stop Mode	Press button, use software, or auto stop					
Alarm Mode	Single, cumulative					
Report Type	PDF format					
Battery	CR2450 3.0V wide-temperature button cell					
Battery Life	2 years for storage and use; Cumulatively 180 days at 10 min logging interval and 25 ℃ (Bluetooth not on)					
Protection Level	IP65					



Software:

ElitechLog

Page: 5-6



Multi-Use Data Logger Tlog Bluetooth Series



Multi
Use

Technical Specifications

Model	Tlog B100	Tlog B100E	Tlog B100H	Tlog B100EH
Sensor Type	Internal Temperature	External Temperature	Internal Temperature and Humidity	External Temperature and Humidity
Temperature Range	-30 ℃ ~ 70 ℃	-40 ℃ ~ 85 ℃	-30 ℃ ~ 70 ℃	-40 ℃ ~ 85 ℃
Humidity Range	/	/	0 ~ 100% RH	0 ~ 100% RH
Data Interface	USB+Bluetooth	USB+Bluetooth	USB+Bluetooth	USB+Bluetooth
Accuracy	Temperature: ±0.3 ℃ (-20 ℃ ~ 40 ℃); ±0.5 ℃ (-50 ℃ ~ 85 ℃); ±1 ℃ (-100 ℃ ~ 150 ℃); ±2 ℃ (others) ±3%RH (25 ℃ : 20%RH ~ 80%RH), ±5%RH(others)			
Resolution	Temperature: 0.1 ℃; Humidity: 0.1%RH			
Memory	32000 points (MAX)			
Logging Interval	10s ~ 24h			
Start Mode	Press button or use software			
Stop Mode	Press button, use software, or auto stop			
Alarm Mode	Single, cumulative			
Report Type	PDF format			
Battery	CR2450 3.0V wide-temperature button cell			
Battery Life	2 years for storage and use; Cumulatively 180 days at 10 min logging interval and 25 ℃ (Bluetooth not on)			
Protection Level	IP65			

Single Use

Single-Use Data Logger

LogEt 6

Software:

ElitechLog

Page: 5-6



Overview

LogEt 6 is a temperature data logger with LCD screen and generated PDF report automatically. It can provide reliable and visible temperature recordings of food and pharmaceuticals during warehouse storage, distribution and transportation in order to ensure safety, security and efficiency.

Features

- LCD display with powerful and clear indications on status, alarms and statistics
- Auto encrypted PDF report with password protection function
- Built-in USB port allows quick access to PCs and ElitechLog software
- Double click START button to quickly mark events for further references
- Up to 5 alarm thresholds, suitable for temperature excursion monitoring on temperature-sensitive goods as food, pharmaceuticals, etc
- Up to 16,000 points memory capacity
- Battery life up to 1 year, shelf life up to 2 years
- Compliance with CE (EN12830), RoHS and FDA (21CFR)



Technical Specifications

Recording Options	Single-Use
Temperature Range	-30 °C to 70 °C
Temperature Accuracy	±0.5 °C (-20 °C/+40 °C); ±1.0 °C (other range)
Temperature Resolution	0.1 °C
Data Storage Capacity	16,000 readings
Shelf Life/Battery	2 years¹/ER14250 3.6V lithium battery
Recording Interval	10 minutes(standard, others on request)
Recording Duration	up to 110 days²(standard, others on request)
Software	PDF /ElitechLog Win or Mac (latest version)
Report Generation	Automatic PDF report
Password Protection	Optional on request
Alarm Configuration	Optional, up to 5 points
Reprogrammable	With free Elitech Win or MAC software
Startup Mode	Button or software
Stop Mode	Button, software or stop when full
Protection Class	IP65

Certifications FDA EN12830, CE, RoHS

- 1.Dependent on optimal storage conditions(15 °C to 23 °C/45% to 75% RH)
- 2.Dependent on application temperature(very low/ high temperatures may shorten it)



Technical Specifications

Recording Options	Multi-Use
Temperature Range	-30 °C to 70 °C
Temperature Accuracy	±0.3 °C (all range)
Temperature Resolution	0.1 °C
Data Storage Capacity	16,000 readings
Shelf Life/Battery	2 years¹/ER14250 3.6V lithium battery
Recording Interval	10 minutes(standard, others on request)
Software	PDF /ElitechLog Win or Mac (latest version)
Report Generation	Automatic PDF report
Password Protection	Optional on request
Connection Interface	USB 2.0, A-Type, bluetooth
Alarm Configuration	Optional, up to 5 points
Reprogrammable	Elitech APP & Elitechlog
Startup Mode	Button or software
Stop Mode	Button, software or stop when full
Protection Class	IP65
Certifications	FDA EN12830, CE, RoHS

1.Dependent on optimal storage conditions(15 °C to 23 °C/45% to 75% RH)

Multi-Use Data Logger

LogEt 8 BLE

Software:

ElitechLog

Page: 5-6



Multi Use

Overview

The LogEt 8 BLE temperature data logger deploys Bluetooth® Low Energy (BLE) technology that allows remote access and manages data logger outside the package or vehicle through Elitech App.

Functions

- Bluetooth® access data logger outside the package anytime anywhere, no pairing required
- Auto encrypted PDF report with password protection function
- Built-in USB port allows quick access to PCs and ElitechLog software
- Multiple configuration, downloading, management and sharing via Elitech app (iOS/Android)
- Unlimited storage on Elitech Cloud
- Compliance with CE (EN12830), RoHS, BQB and FDA (21CFR)

Multi-Use Data Logger

LogEt 8 Life Science Series

Overview

The LogEt 8 Life Science Series are ultra-high precision temperature and humidity data loggers that can be used for thoroughly monitoring the quality and safety of sensitive goods' during transportation or storage, which helps users make decisions to accept or reject goods immediately.

Features

- High-precision temperature/humidity sensor, accuracy heightened to $\pm 0.3^{\circ}\text{C}$, $\pm 3\%\text{RH}$
- Internal/external sensor with multiple combinations, applicable to various scenarios
- Software-free, online website configuration for various parameters
- Auto encrypted PDF report with password protection function
- Built-in USB port allows quick access to PCs and ElitechLog software
- Up to 7 alarm thresholds configurable
- IP65 rating
- 2-year lifespan of battery in Normal-temperature
- Compliance with CE (EN12830), RoHS and FDA (21CFR)

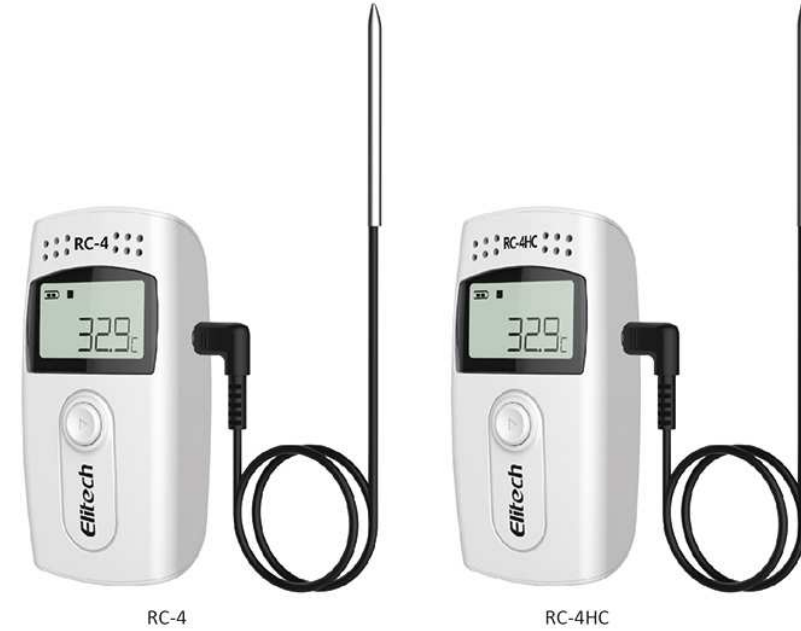
Technical Specifications

	LogEt 8	LogEt 8TH	LogEt 8TE	LogEt 8THE	LogEt 8PTE	LogEt 8UTE
Recording Options	Multi-Use	Multi-Use	Multi-Use	Multi-Use	Multi-Use	Multi-Use
Temperature Range	-30 °C to 70 °C	-30 °C to 70 °C	-40 °C to 85 °C	-40 °C to 85 °C	-85 °C to 150 °C	-196 °C to 150 °C
Humidity Range	—	0-100% RH	—	0-100% RH	—	—
Temperature Accuracy	$\pm 0.3^{\circ}\text{C}$ (all range)	$\pm 0.3^{\circ}\text{C}$ (-20 °C/+40 °C); $\pm 0.5^{\circ}\text{C}$ (other range)	$\pm 0.3^{\circ}\text{C}$ (-20 °C/+40 °C); $\pm 0.5^{\circ}\text{C}$ (other range)	$\pm 0.3^{\circ}\text{C}$ (-20 °C/+40 °C); $\pm 0.5^{\circ}\text{C}$ (other range)	$\pm 0.3^{\circ}\text{C}$ (-20 °C/+40 °C); $\pm 0.5^{\circ}\text{C}$ (-50 °C/+85 °C); $\pm 1^{\circ}\text{C}$ (other range)	$\pm 0.3^{\circ}\text{C}$ (-20 °C/+40 °C); $\pm 0.5^{\circ}\text{C}$ (-50 °C/+85 °C); $\pm 1^{\circ}\text{C}$ (-100 °C/+150 °C) $\pm 2^{\circ}\text{C}$ (other range)
Humidity Accuracy	—	$\pm 3\%\text{RH}$ (25 °C, 20%RH to 80%RH), $\pm 5\%\text{RH}$ (other range)	—	$\pm 3\%\text{RH}$ (25 °C, 20%RH to 90%RH), $\pm 5\%\text{RH}$ (other range)	—	—
Resolution	0.1 °C	0.1 °C, 0.1%RH	0.1 °C	0.1 °C, 0.1%RH	0.1 °C	0.1 °C
Data Storage Capacity	16,000 readings					
Shelf Life/Battery	2 years*/ER14250 3.6V lithium battery					
Recording Interval	10 minutes(standard, others on request)					
Software	PDF /ElitechLog Win or Mac (latest version)					—
Report Generation	Automatic PDF report					—
Password Protection	Optional on request					
Alarm Configuration	Optional, up to 5 points					
Reprogrammable	With free Elitech Win or MAC software					
Startup Mode	Button or software					
Stop Mode	Button, software or stop when full					
Protection Class	IP65					
Certifications	FDA EN12830, CE, RoHS					

1.Dependent on optimal storage conditions(15 °C to 23 °C/45% to 75% RH)



Software:
ElitechLog
Page: 5-6



RC-4

RC-4HC

Overview

RC-4 series are Elitech conventional temperature/humidity data loggers, support external temperature sensor and buzzer alarms. This series is world-wide remote access to various applications like life sciences, food, shipping, logistics, and pharmaceutical industries.

Features

- Internal temperature/humidity sensor, accuracy up to $\pm 0.5^{\circ}\text{C}$, $\pm 3\%\text{RH}$
- Double alarm thresholds configurable with buzzer alarm notification
- USB cable included, no reader required to connect with PC and ElitechLog software
- External temperature sensors applicable to various scenarios (optional)
- Wall-mounted in various locations with multiple mounting hardware(optional)
- Compliance with CE (EN12830), RoHS and FDA (21CFR)

Multi-Use Data Logger

RC-4 Series

Software:
ElitechLog
Page: 5-6



Technical Specifications	RC-4	RC-4HC
Recording Options	Multi-Use	Multi-Use
Temperature Range	-30 °C to 60 °C (Internal sensor) -40 °C to 85 °C (optional external sensor)	-30 °C to 60 °C (Internal sensor) -40 °C to 85 °C (optional external sensor)
Humidity Range	0 ~ 100% RH	-
Temperature Accuracy	$\pm 0.5^{\circ}\text{C}$ (-20 °C/+40 °C) $\pm 1.0^{\circ}\text{C}$ (other range)	$\pm 0.5^{\circ}\text{C}$ (-20 °C/+40 °C); $\pm 1.0^{\circ}\text{C}$ (other range)
Humidity Accuracy	$\pm 3\%\text{RH}$ (25 °C, 20%RH to 90%RH) $\pm 5\%\text{RH}$ (other range)	-
Resolution	0.1 °C, 0.1%RH	0.1 °C
Data Storage Capacity	16,000 readings	16,000 readings
Shelf Life/Battery	1 year*/CR2450 button cell	1 year*/CR2450 button cell
Recording Interval	15 minutes(standard, others on request)	15 minutes(standard, others on request)
Report Generation	PDF&Excel report by Elitech software	PDF&Excel report by Elitech software
Alarm Configuration	Optional, only 2 points	Optional, only 2 points
Reprogrammable	With free Elitech Win or MAC software	With free Elitech Win or MAC software
Startup Mode	Button	Button
Stop Mode	Button, software or stop when full	Button, software or stop when full
Certifications	FDA EN12830, CE, RoHS	FDA EN12830, CE, RoHS

RC-4

1.Dependent on optimal storage conditions(15 °C to 23 °C/45% to 75% RH)

RC-4HC

1.Dependent on optimal storage conditions(15 °C to 23 °C/45% to 75% RH)

Software:

ElitechLog

Page: 5-6



GSP-6

GSP-6G

GSP-8

Multi-Use Data Logger

GSP-6/6G/8

Overview

GSP-6 series are temperature and humidity data loggers featured with large display and optional glycol bottle. Its dual probe accessories support multiple combination options of temperature and humidity. Employs with multiple alerting methods and shorten logging intervals automatically, it avoids over-limits.

Elitech outstanding ElitechLog software services on PC by setting 2 temperature/humidity alarm thresholds, viewing temperature/humidity history data, exporting detailed data report, etc.

Technical Specifications	GSP-6/6G	GSP-8
Recording Options	Multi-Use	Multi-Use
Temperature Range	-40 °C~85 °C	-20 °C~60 °C (internal sensor); -40 °C~85 °C (external probe)
Humidity Range	0~100% RH	0~100% RH
Temperature Accuracy	±0.5 °C (-20 °C/+40 °C); ±1.0 °C (other range)	±0.3 °C (-20 °C/+40 °C); ±0.5 °C (others)
Humidity Accuracy	±3%RH(25 °C, 20%RH to 90%RH); ±5%RH(other range)	±3%RH(25 °C, 20%RH to 90%RH); ±5%RH(others)
Resolution	0.1 °C, 0.1%RH	0.1 °C, 0.1%RH
Data Storage Capacity	16,000 readings	100,000 readings
Shelf Life/Battery	2 years' ER14505	Rechargeable 18650 lithium battery
Recording Interval	15 minutes(standard, others on request)	15 minutes(standard, others on request)
Alarm Configuration	Optional, only 2 points	Optional, up to 5 points
Reprogrammable	With free Elitech Win or MAC software	Auto PDF report, PDF/EXCEL/TXT by ElitechLog software
Stop Mode	Button, software or stop when full	Button, software or stop when full
Certifications	FDA EN12830, CE, RoHS	FDA EN12830, CE, RoHS

Features

- Internal temperature and humidity sensor, accuracy up to $\pm 0.5^{\circ}\text{C}$, $\pm 3\%\text{RH}$
- Built-in USB port allows quick access to PCs and ElitechLog software
- Large LCD display convenient for data view from a distance
- Various alerting modes as Audio-visual alarm, screen indicator alarm and etc
- Shorten logging interval automatically when temperature and humidity alarm triggered
- Optional glycol bottle as thermal buffer could reflect more accurate and stable readings
- Powered by battery or USB connection
- Compliance with CE (EN12830), RoHS and FDA (21CFR)



Multi-Use Data Logger

DR-210A

Overview

DR-210A is a temperature and humidity logger that supports on-site printing. It integrates data logging, USB data exporting, dual alerting methods and other functions; It can network with the WLAN via RS-485 interface to realize simultaneous multipoint monitoring.

Features

- Built-in printer for on-site data printing
- Data management on PC software via USB connection support
- RS-485 is available to form local network for simultaneous multipoint monitoring
- Buzzer and relay alarm
- Over 7 days rechargeable battery life backup

Technical Specifications

Temperature Measurement Range	-50 °C to 120 °C
Temperature Accuracy	$\pm 0.5^{\circ}\text{C}$ (-30 °C to +20 °C); $\pm 1.0^{\circ}\text{C}$ (-40 °C to -30 °C) & (+20 °C to +70 °C) $\pm 2^{\circ}\text{C}$ for other range
Humidity Measurement Range	0%~100%RH
Humidity Accuracy	25 °C : $\pm 5\%\text{RH}$ (typical case) (10 °C~40 °C) : $0\sim 59\%\text{RH}$: $\pm 6\%\text{RH}$ (max) $60\sim 95\%\text{RH}$: $\pm 8\%\text{RH}$ (max)
Resolution	0.1 °C, .1%RH
Recording Interval	1 Min-24 Hr
Memory Capacity	13000 data points (Max.)
Alarm Signaling	Buzzer and alarm relay
Sensor	2 channels (temperature and humidity) sensor 5M
Data Interface	USB, RS-485
Standby Battery	3.6V 2200mAh NI-MH Battery



TI-10

TI-21

TI-30

TI-40

Single-Use indicators Ti Series

Overview

TI series are temperature indicators as the low-cost solutions for temperature monitoring. Easy to operate and support factory customization in temperature measuring ranges and logging intervals.

Features TI-10/21

- Customizable temperature measuring ranges, cost-effectiveness
- LED alarm indication, no need to unpack, easy to check
- Battery life up to 180 days; shelf life up to 4 years
- Compliance with CE (EN12830), RoHS and FDA (21CFR)
- Ti-10 shelf life up to 1 year; Ti-21 shelf life up to 4 years

Features TI-30/40

- Customizable temperature measuring ranges, cost-effectiveness
- LCD display with powerful indications on temperatures, alarms and statistics
- Battery life up to 180 days; shelf life up to 4 years
- Conform to WHO requirements for photocopy
- Compliant with WHO
- Compliance with CE (EN12830), RoHS and FDA (21CFR)

Technical Specifications	TI-10	TI-21	TI-30	TI-40
Temperature Range	-10 °C to 50 °C	-10 °C to 50 °C	-30 °C to 70 °C	-30 °C to 70 °C
Temperature Accuracy	±0.5 °C	±0.5 °C	±0.5 °C (-20 °C /+40 °C); ±1 °C (other range)	±0.5 °C (-20 °C /+40 °C); ±1 °C (other range)
Temperature Resolution	0.1 °C	0.1 °C	0.1 °C	0.1 °C
Shelf Life/Battery	2 year*/CR2032 button cell	2 year*/CR2032 button cell	2 years*/CR2450 button cell	2 years*/CR2450 button cell
Recording Interval	1 minutes(standard)	1 minutes(standard)	5 minutes(standard)	5 minutes(standard)
Recording Duration	up to 180 days ² (standard, others on request)	up to 180 days ² (standard, others on request)	up to 180 days ² (standard, others on request)	up to 180 days ² (standard, others on request)
Alarm Configuration	Optional, only 2 points	Optional, only 2 points	Optional, up to 5 points	Optional, up to 5 points
Startup Mode	Break to start	Break to start	Button	Button
Stop Mode	Stop when the battery is exhausted	Stop when the battery is exhausted	Button	Button
Protection Class	IP67	IP67	IP67	IP67
Certifications	FDA EN12830, CE, RoHS	FDA EN12830, CE, RoHS	FDA EN12830, CE, RoHS	FDA EN12830, CE, RoHS

1. Depending on optimal storage conditions(15 °C to 23 °C /45% to 75% RH)
2. Depending on application temperature(very low/ high temperatures may shorten it)

1. Depending on optimal storage conditions(15 °C to 23 °C /45% to 75% RH)
2. Depending on application temperature(very low/ high temperatures may shorten it)

1. Depending on optimal storage conditions(15 °C to 23 °C /45% to 75% RH)
2. Depending on application temperature(very low/ high temperatures may shorten it)

1. Depending on optimal storage conditions(15 °C to 23 °C /45% to 75% RH)
2. Depending on application temperature(very low/ high temperatures may shorten it)

623 189 405
amorera@morerainstrumentes.es
www.morerainstrumentes.es

Instrumentos
Laboratorio
Metrológicos
Calibraciones ENAC